

PARABOLA

Richard Thompson

Architectural Director



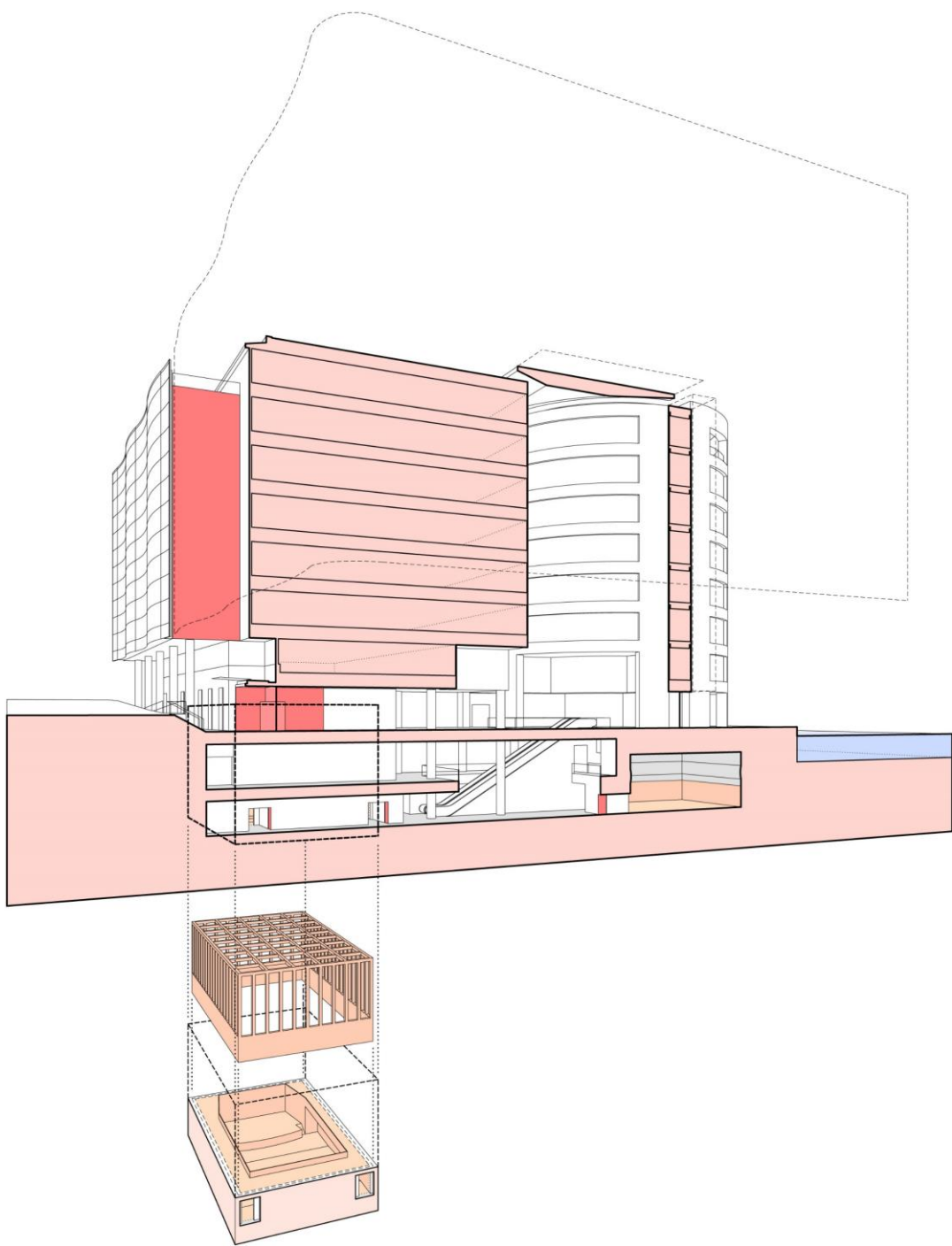
Kings Cross, 2002

A photograph of Peter Millican, an older man with grey hair and glasses, wearing a white striped shirt and a red scarf. He is sitting at a wooden desk, smiling, with a laptop and a coffee cup in front of him. The background is a blurred office or public space with warm lighting. On the right side of the image, there is a dark vertical bar containing white text.

Peter Millican

Parabola's
Chairman









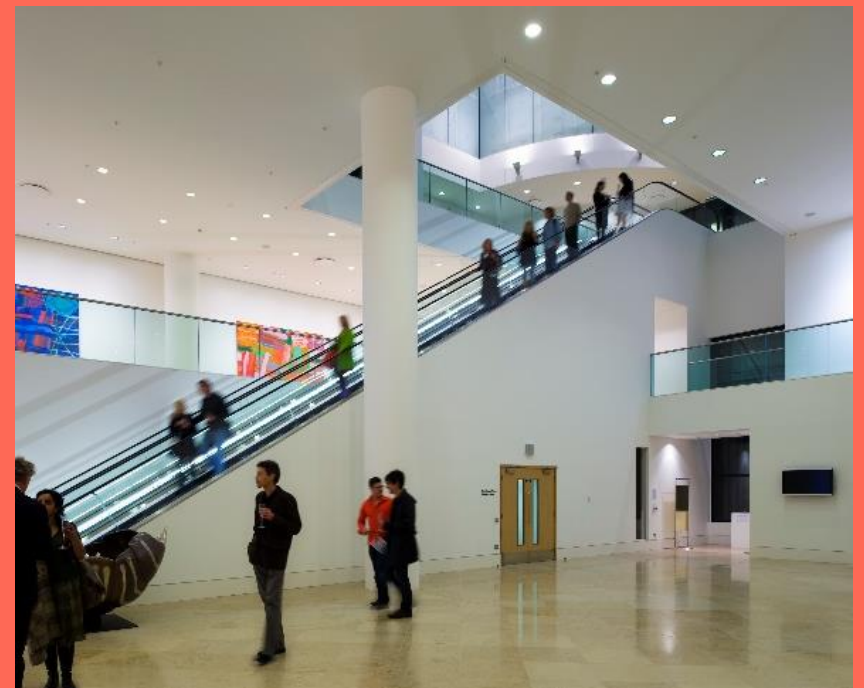
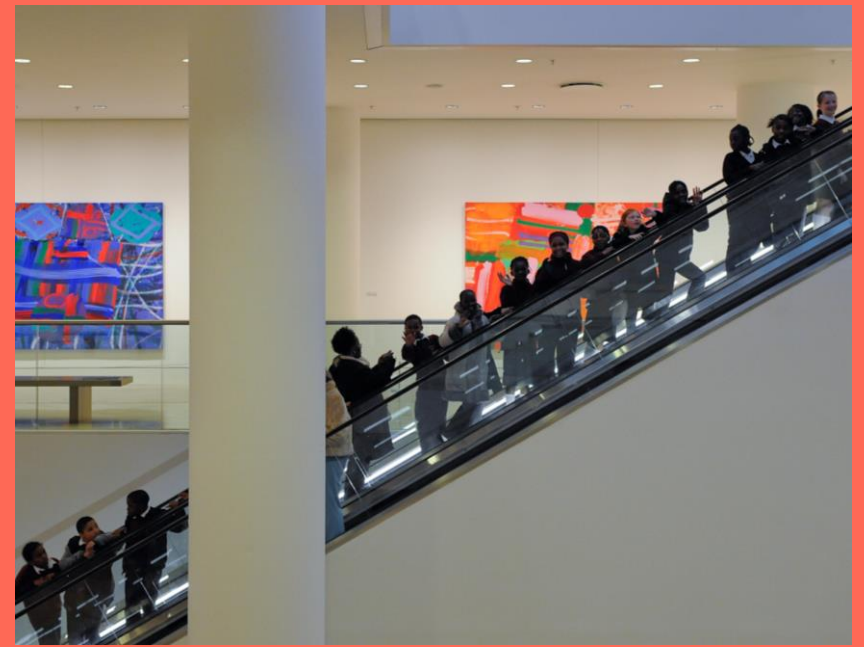


- Ground Floor ↗ ↘
- Pangolin London
- Office Reception
- Box Office i
- Battlebridge Room AAA
AAA
- Bar & Restaurant W
- Atrium Café ☺
- Toilets ♿
- Lift ♿

- Gallery Level ↗
- Kings Place Gallery ↖
- Balcony Hall One ↘
- Toilets ♿
- Lift ♿

- Concert Level ↖
- Hall One
- Hall Two
- St Pancras Room AAA
AAA
- Horsfall Room AAA
AAA
- Limehouse Room AAA
AAA
- Wenlock Room AAA
AAA
- The Music Base
- Bar ☺
- Cloakroom ☂
- Toilets ♿
- Lift ♿





British Council of Offices

2009

“Once every decade or so a building comes along which alters the common understanding of what is commercially possible. Kings Place has not just moved the goal posts – it rewrote the book of how commercial property can integrate with the life of a city.”



Edinburgh Park

2013

Edinburgh Airport

Edinburgh Gateway

RBS Headquarters

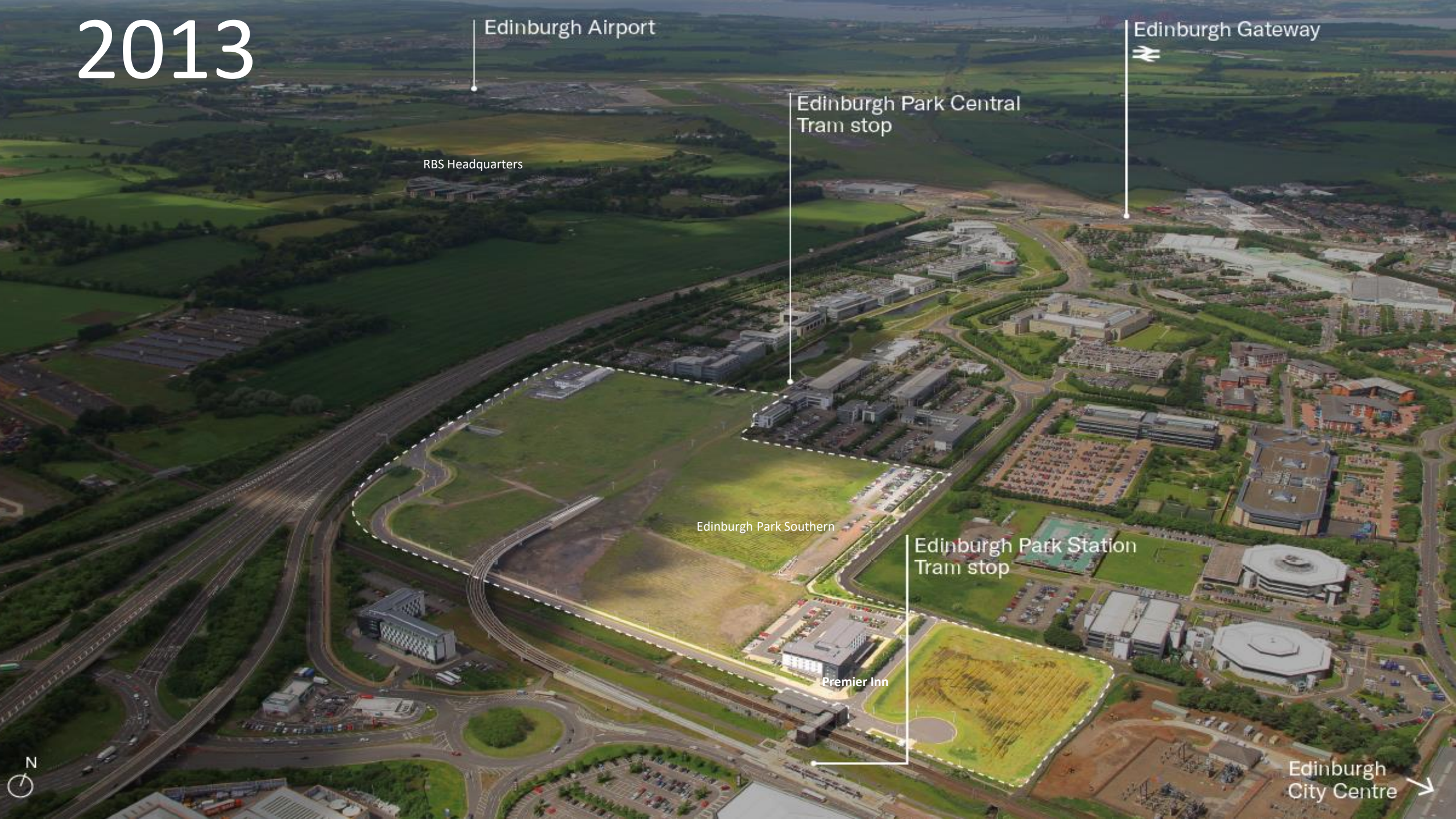
Edinburgh Park Central
Tram stop

Edinburgh Park Southern

Edinburgh Park Station
Tram stop

Premier Inn

Edinburgh
City Centre



THE VISION

The master plan for Edinburgh Park has a high density urban feel with contemporary European style landscaping, focussed on wide tree lined boulevards and diverse public transport options. The plan integrates offices, homes, leisure and business support amenities around key public squares and spaces designed to bring the community together to share experiences and enrich lives.

EDINBURGH AIRPORT

NATWEST HEADQUARTERS

GYLE CENTRE TRAM STOP

EDINBURGH GATEWAY STATION & TRAM STOP

1 New Park Square

EDINBURGH PARK CENTRAL TRAM STOP

S1 Residential Development

400 HOMES

< STIRLING (M9) / PERTH (M90)

< GLASGOW (M8) / STIRLING (M9)

City bypass

KEY

1. Miller Homes
2. RSPB
3. Galliford Try
4. Ibis Hotel
5. JP Morgan
6. Edinburgh Palette
7. Scottish Prison Service
8. Pulsant
9. Lumicron Technology
10. HSBC
11. Ooni
12. Pure Offices
13. Park Centre Amenities
14. Diageo
15. Busy Bee Nursery
16. Business Stream
17. Aegon
18. Gyle Shopping Centre
19. M&G Prudential
20. Lloyds Banking Group
21. Premier Inn
22. Novotel
23. Hermiston Gait Retail Park

AEG Arena

DUE 2027

EDINBURGH PARK STATION TRAM STOP

EDINBURGH PARK STATION

20

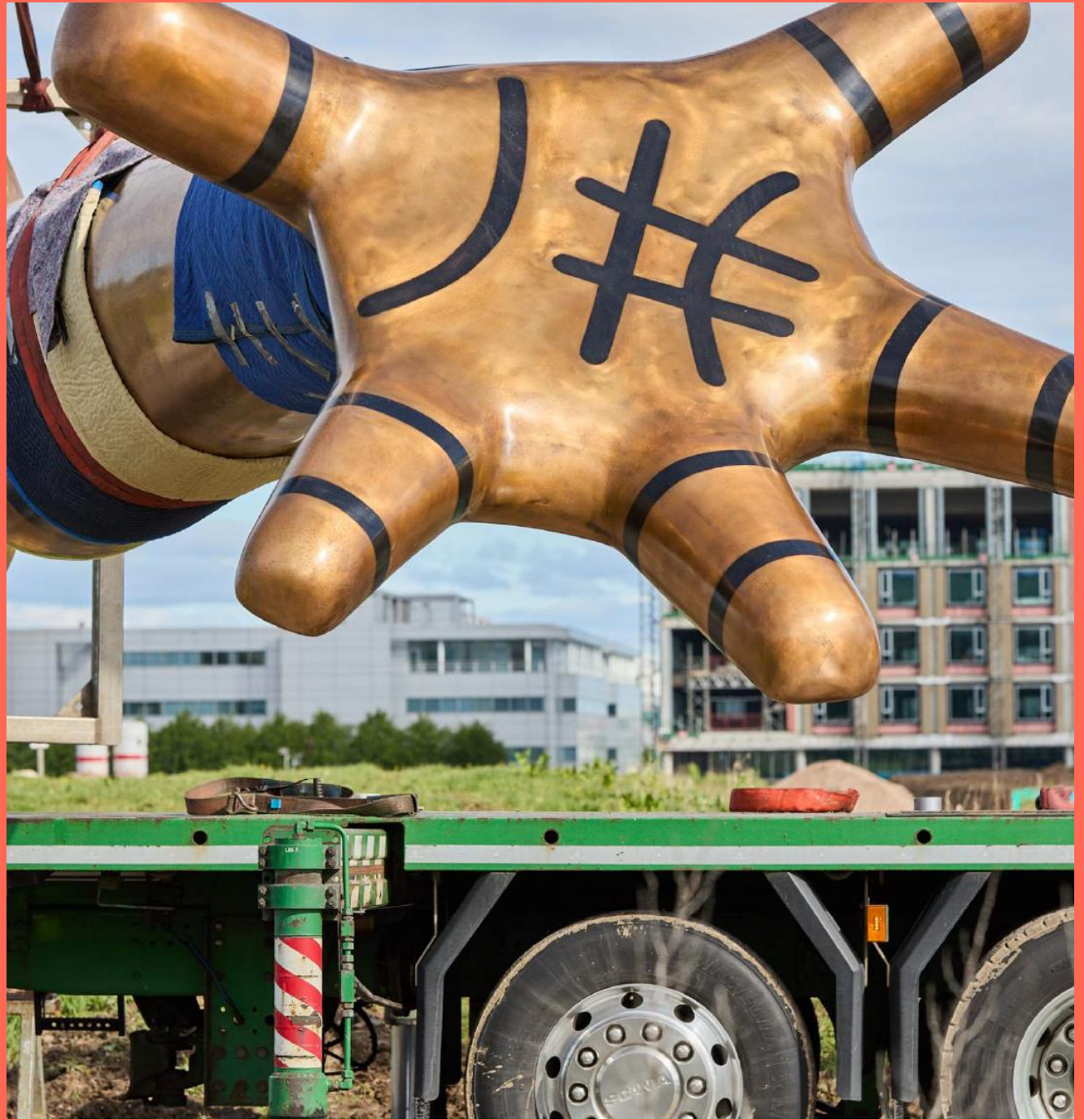
und the success
ss of its people

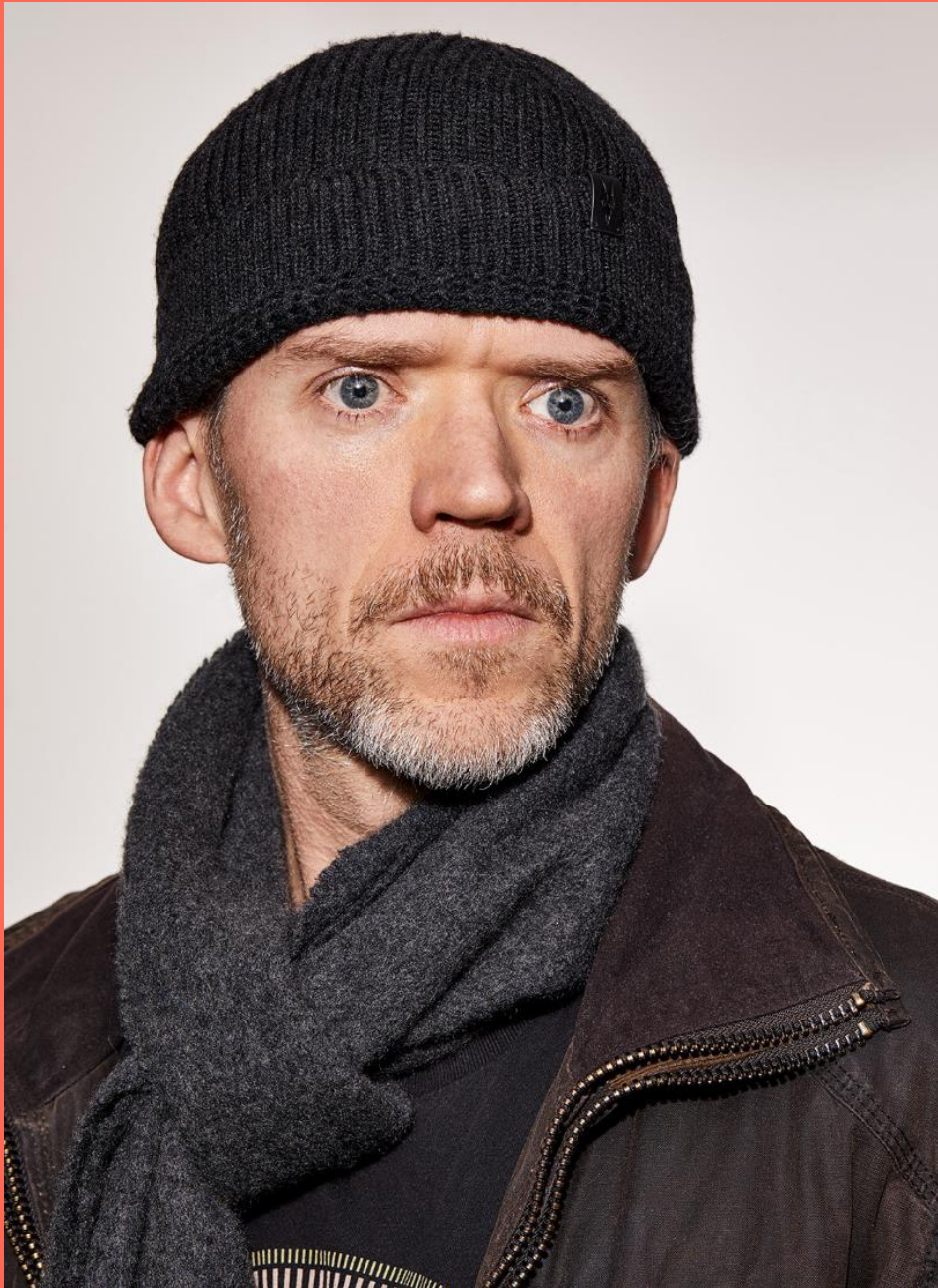
ARTS AND
SCULPTURE.

An ambitious ne

PICTURE PERFECT.

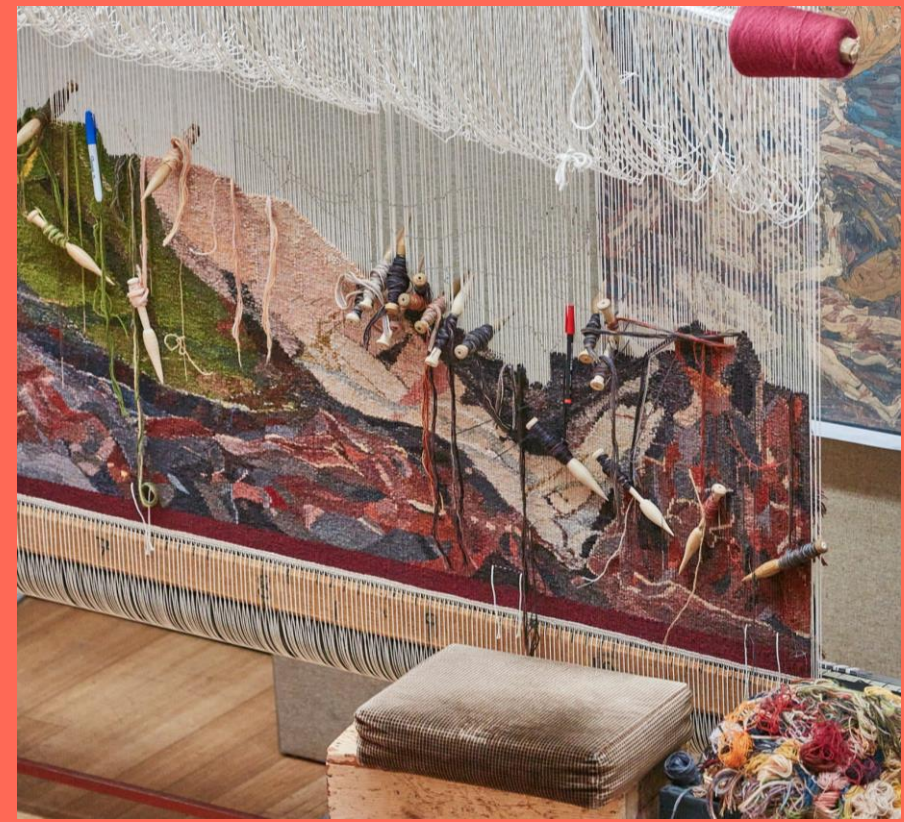
Petra Eriksson





Photographer in Residence – Andy Mather





Poet in Residence – Janette Ayachi

Naming the Streets, Poetry and Edinburgh Park Bi-Annual Zine



Vulcano Poem

Now we have these precious pieces of you, Paolozzi,
pinballed across Edinburgh
as if fell they from the sky like meteorites
as if the heavens spat them out like seeds.
A Vulcan twin sits at The Modern Two
holding up the gallery gardens for all to see,
two brothers in Edinburgh,
one lives under the mirror of its own steel
polish of silver & ribbed metallic
see how we can lower
the Gods down on cranes.
A step-brother in London
sits in the far fog of Greenwich
resurging from the ashes under each new moon.
At night the twins strap up & down Leith Walk
wave at the boats from the port
stars at their back stuck on in pantomime
pupils as giant as headlamps,
comforting like a lighthouse....

H

LIVING HERE IS A DELICIOUS, LAYERED CAKE WITH LOTS OF DIFFERENT INGREDIENTS THAT MAKE IT TASTE SWEET.

E

LIVING HERE IS AN ICE-CREAM IN SUMMER THAT GIVES YOU AN ICE-CREAM SMILE AND DRIBBLES THROUGH YOUR FINGERS.

LIVING HERE IS JUST RIGHT. IT'S MORE THAN MONEY, BETTER THAN BUILDINGS.

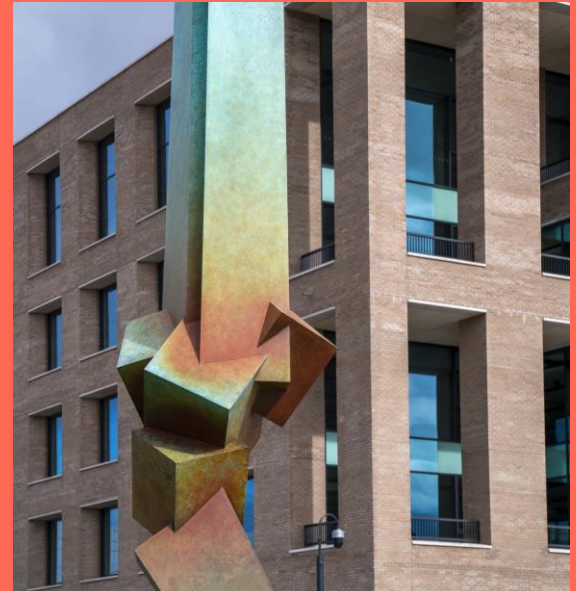
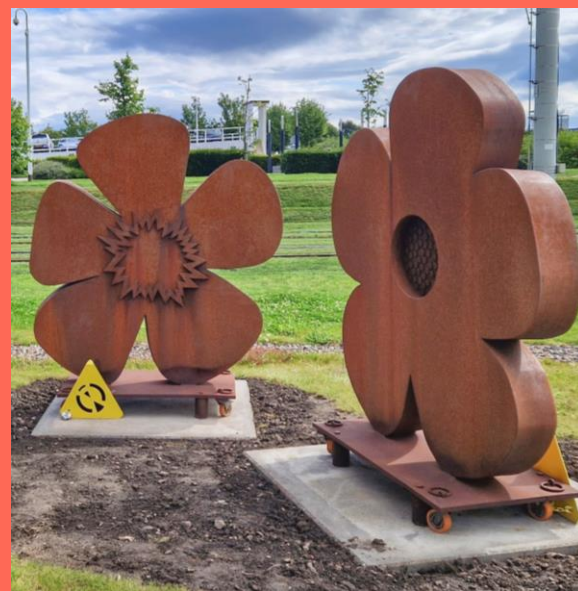
E

LIVING HERE IS THE CENTRE OF OUR UNIVERSE, A SOLAR EXPLOSION OF CHEERFULNESS. IT IS A FLYING MIRACLE.

Here a poem written by PS children from Murraybarn Primary School, working with poet Colin McCune, for Push the Boat Out: Edinburgh's International Poetry Festival pushtheboatout.org

Commissioned as part of Edinburgh Park's Art Strategy.













EDINBURGH ARENA

Entrance A

**AN
AMBITIOUS NEW
COMMUNITY
DESIGNED
AROUND THE
HAPPINESS AND
SUCCESS
OF ITS PEOPLE**





Edinburgh Park